



607

**WELCOME TO THE EXHIBITION «ECHOES OF HYSTERICUS:
DEPICTIONS OF ANCIENT SCULPTURES».**

**EXPLORE THE ARCHAEOLOGICAL RENDERINGS OF MYTHICAL
SCULPTURES BELIEVED TO HAVE ADORNED VARIOUS AREAS OF THE
ANCIENT TEMPLE ON THE ISLAND.**

**OBSERVE «SCREAMING FIGURE: SCULPTURE NO. 3,
ENTRANCE STAIRCASE», ILLUSTRATING A MYTHICAL GUARDIAN
THOUGHT TO HAVE STOOD AT THE TEMPLE'S ENTRANCE, POSSIBLY
SERVING A PROTECTIVE FUNCTION.**

**ENCOUNTER «SCREAMING FIGURE: SCULPTURE NO. 5,
INNER CHAMBER», PORTRAYING A FIGURE BELIEVED TO HAVE
BEEN LOCATED WITHIN THE TEMPLE'S INNER SANCTUM, POSSIBLY
SYMBOLIZING A DEITY OR SIGNIFICANT MYTHOLOGICAL ENTITY.**

**STUDY «SCREAMING FIGURE: SCULPTURE NO. 2, ALTAR PASSAGE»,
DEPICTING A SCULPTURE LIKELY POSITIONED NEAR THE PASSAGE
LEADING TO THE TEMPLE'S ALTAR, POTENTIALLY REPRESENTING
A RITUALISTIC OR CEREMONIAL ASPECT.**

**EACH PAINTING OFFERS INSIGHTS INTO THE SPECULATIVE
RECONSTRUCTION OF HYSTERICUS'S ANCIENT ARCHITECTURE
AND THE ROLE OF SCULPTURES WITHIN ITS RELIGIOUS
AND CULTURAL CONTEXT.**



**SCREAMING FIGURE WHOLE BODY:
NO. 8, INNER CHAMBER**

2025

150x100cm

canvas, graphite, ink, acrylic

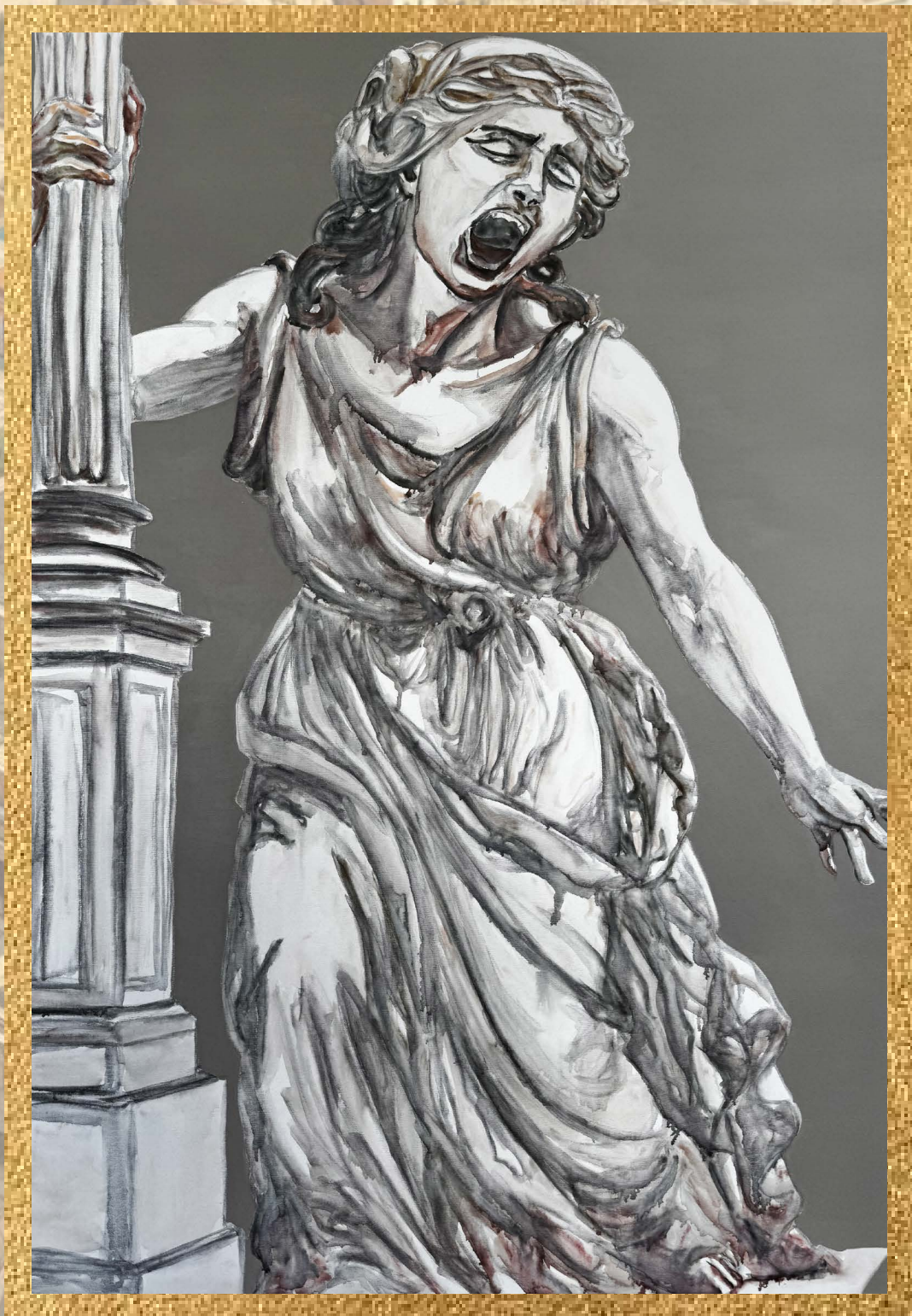


**SCREAMING FIGURE WHOLE BODY:
NO. 10, LIBRARY PASSAGE**

2025

150x100cm

canvas, graphite, ink, acrylic

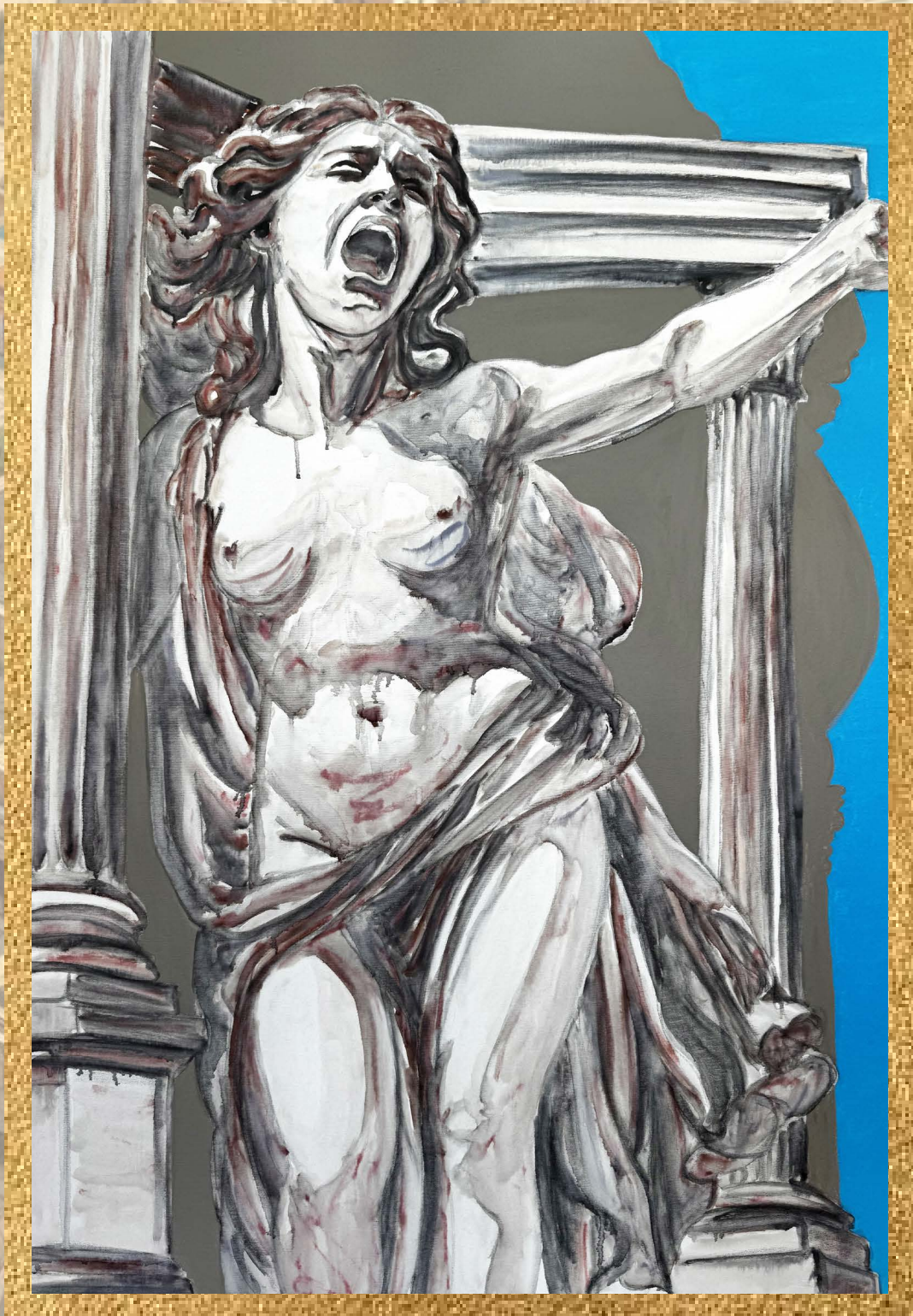


**SCREAMING FIGURE WHOLE BODY:
NO. 6, HALLWAY JUNCTION**

2025

150x100cm

canvas, graphite, ink, acrylic



**SCREAMING FIGURE WHOLE BODY:
NO. 3, ALTAR PASSAGE**

2025

150x100cm

canvas, graphite, ink, acrylic



**SCREAMING FIGURE WHOLE BODY:
NO. 1, SACRED GARDENS**

2025

150x100cm

canvas, graphite, ink, acrylic



**SCREAMING FIGURE WHOLE BODY:
NO. 9, ENTRANCE STAIRCASE**

2025

150x100cm

canvas, graphite, ink, acrylic



**SCREAMING FIGURE WHOLE BODY:
NO. 7, ALTAR PASSAGE**

2025

150x150cm

canvas, graphite, ink, acrylic



**SCREAMING FIGURE:
SCULPTURE NO. 3, ENTRANCE STAIRCASE**

2024

60x60cm

canvas, ink, saffron, acrylic



**SCREAMING FIGURE:
SCULPTURE NO. 5, INNER CHAMBER**

2024

60x60cm

canvas, ink, saffron, acrylic



**SCREAMING FIGURE:
SCULPTURE NO. 7, ENTRANCE STAIRCASE**

2024

60x60cm

canvas, ink, saffron, acrylic



**SCREAMING FIGURE:
SCULPTURE NO. 2, ALTAR PASSAGE**

2024

60x60cm

canvas, ink, saffron, acrylic



**SCREAMING FIGURE:
SCULPTURE NO. 4, LIBRARY PASSAGE**

2024

60x60cm

canvas, ink, saffron, acrylic



**SCREAMING FIGURE:
SCULPTURE NO. 4, HALLWAY JUNCTION**

2024

60x60cm

canvas, ink, saffron, acrylic

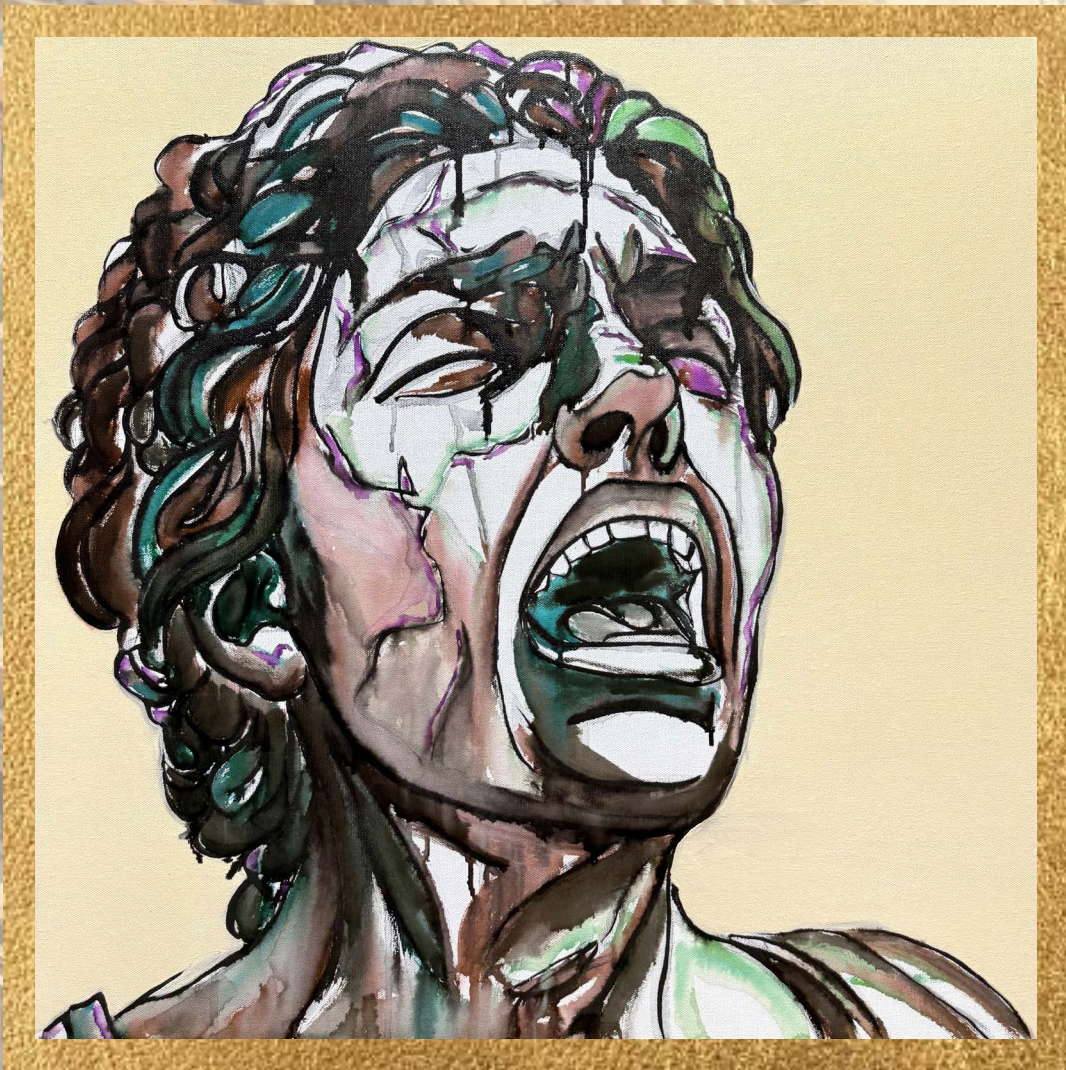


**CRYING MADONNA SMALL,
ALTAR PASSAGE**

2024

60x60cm

canvas, ink, saffron, acrylic

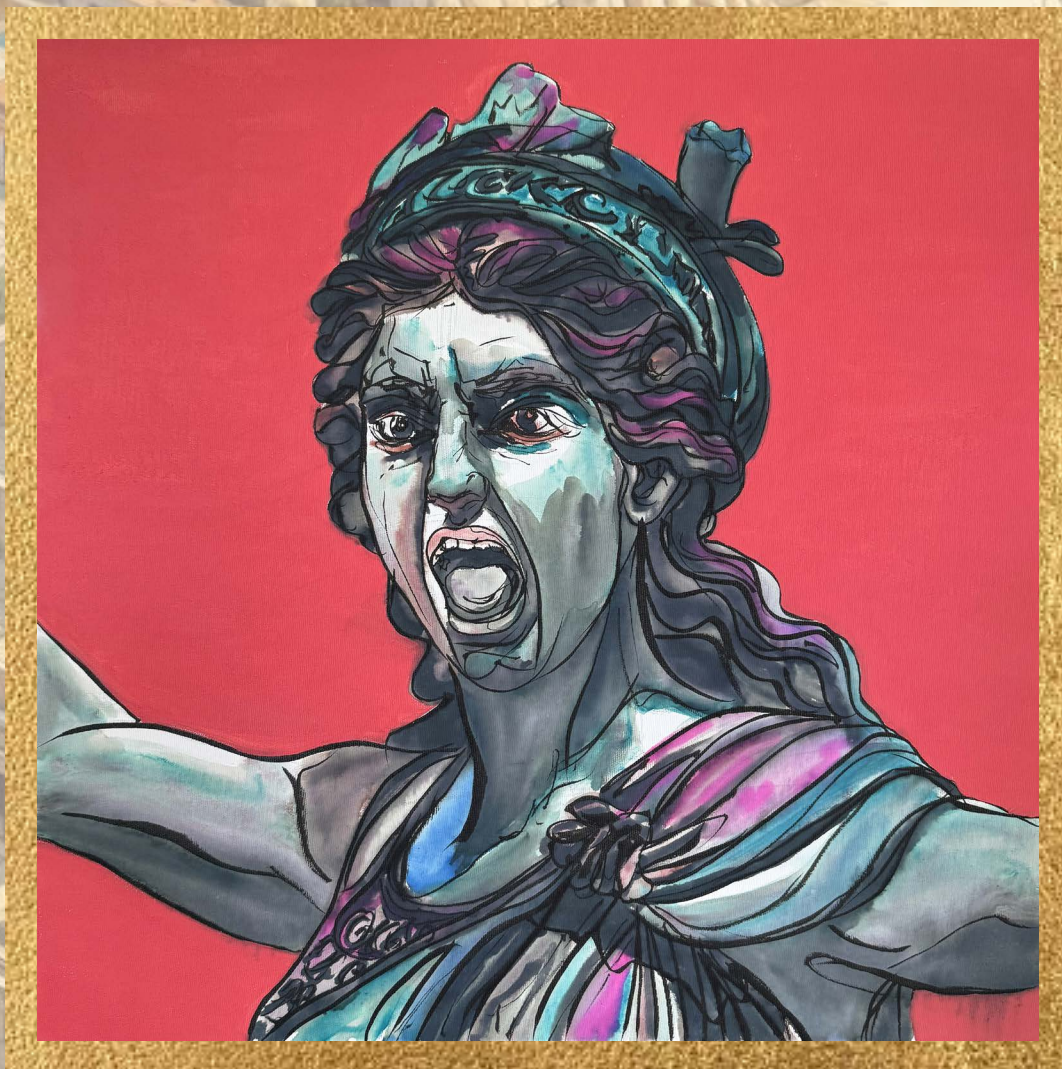


**SCREAMING FIGURE:
SCULPTURE NO. 7, SACRED GARDENS**

2024

60x60cm

canvas, ink, saffron, acrylic

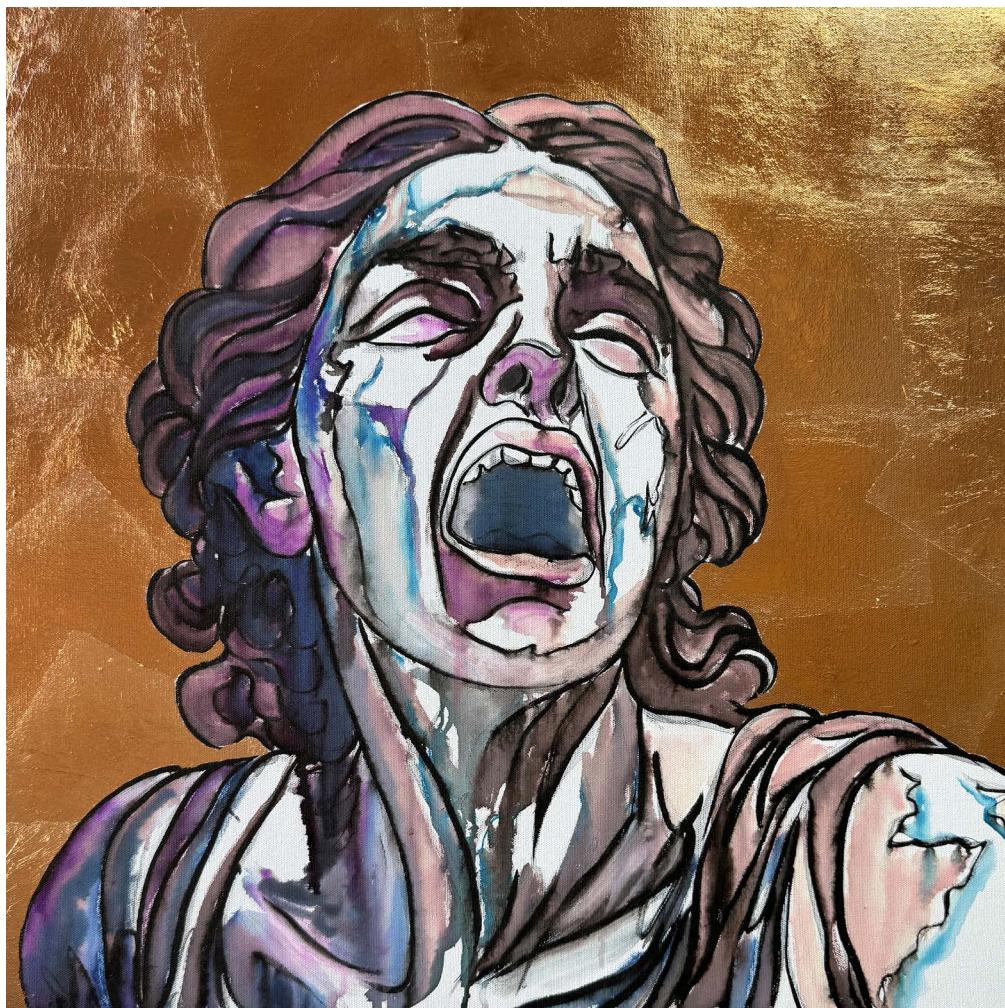


**SCREAMING FIGURE:
SCULPTURE NO. 8, LIBRARY PASSAGE**

2024

60x60cm

canvas, ink, saffron, acrylic



**CRYING FIGURE:
SCULPTURE NO. 5, LIBRARY PASSAGE**

2024

60x60cm

canvas, ink, saffron, potal, epoxy resin

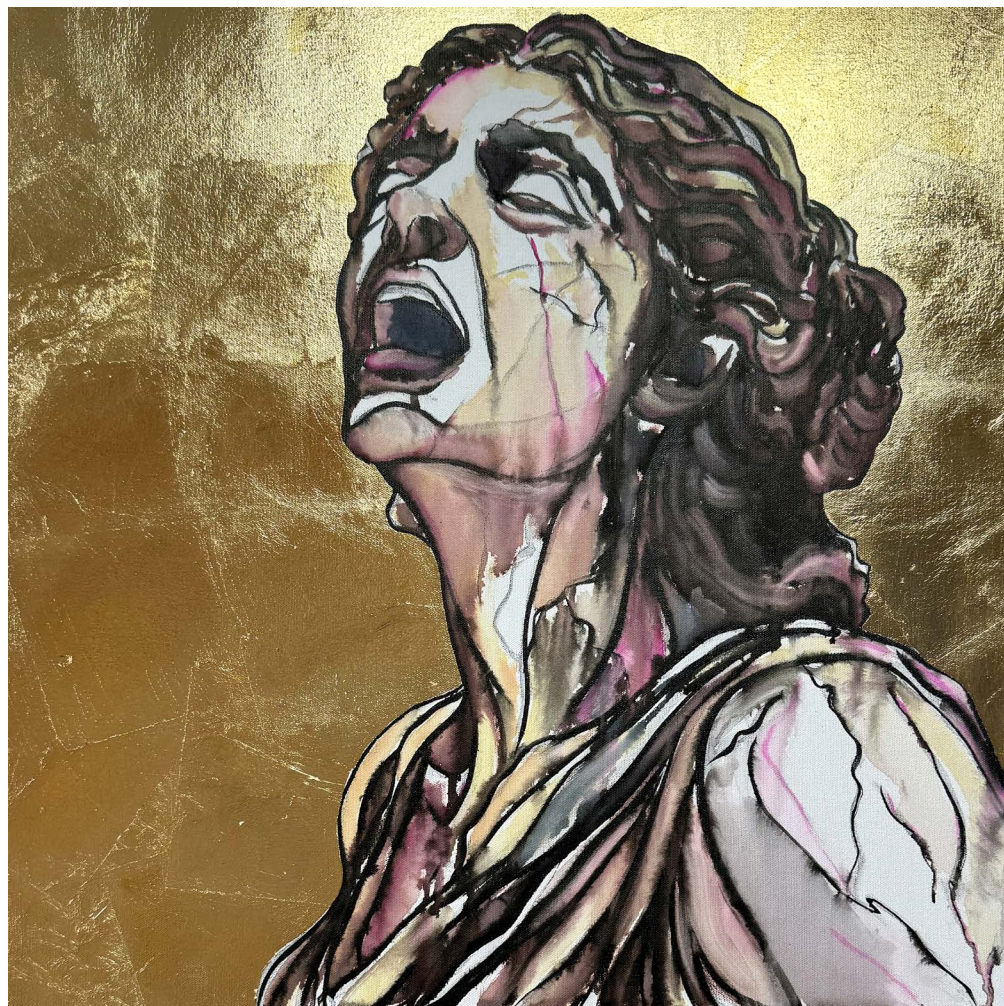


**SCREAMING FIGURE:
SCULPTURE NO. 4, INNER CHAMBER**

2024

60x60cm

canvas, ink, saffron, potal, epoxy resin



**CRYING FIGURE:
SCULPTURE NO. 6, LIBRARY PASSAGE**

2024

60x60cm

canvas, ink, saffron, potal, epoxy resin

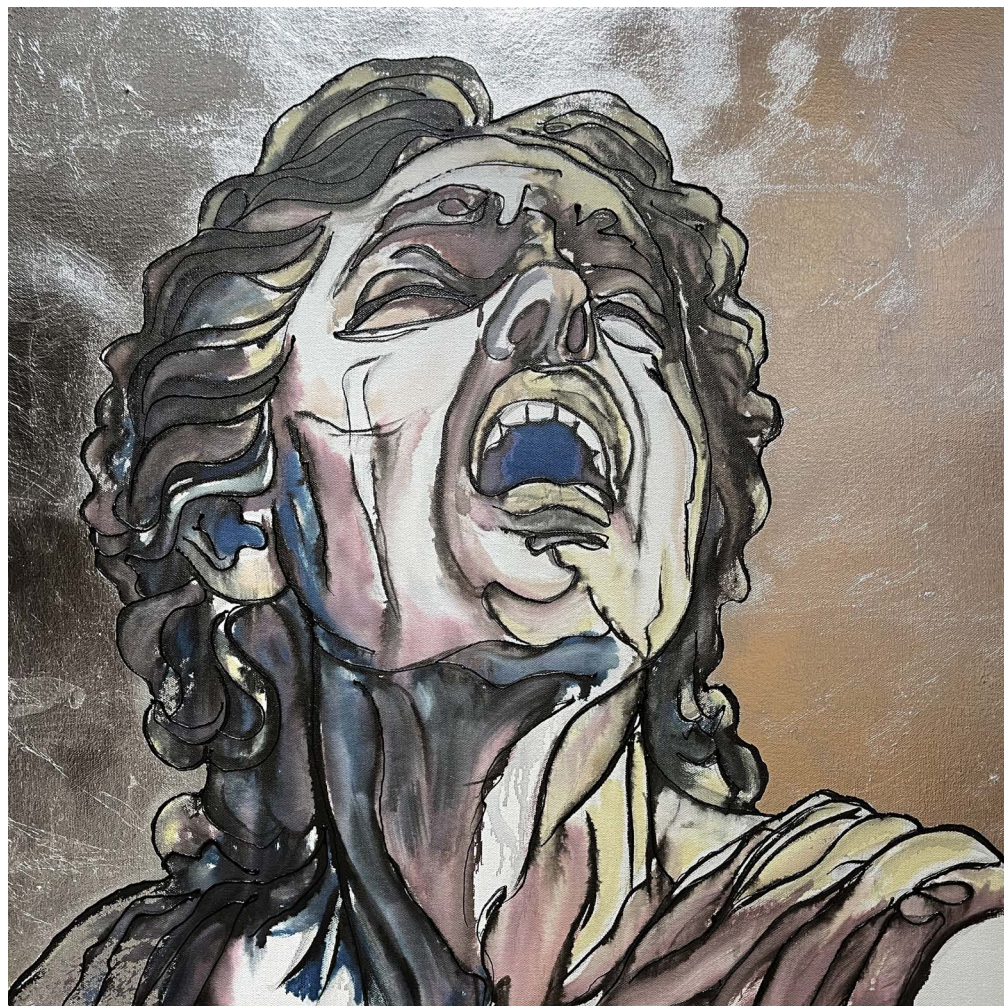


**CRYING FIGURE:
SCULPTURE NO. 7, LIBRARY PASSAGE**

2024

60x60cm

canvas, ink, saffron, potal, epoxy resin

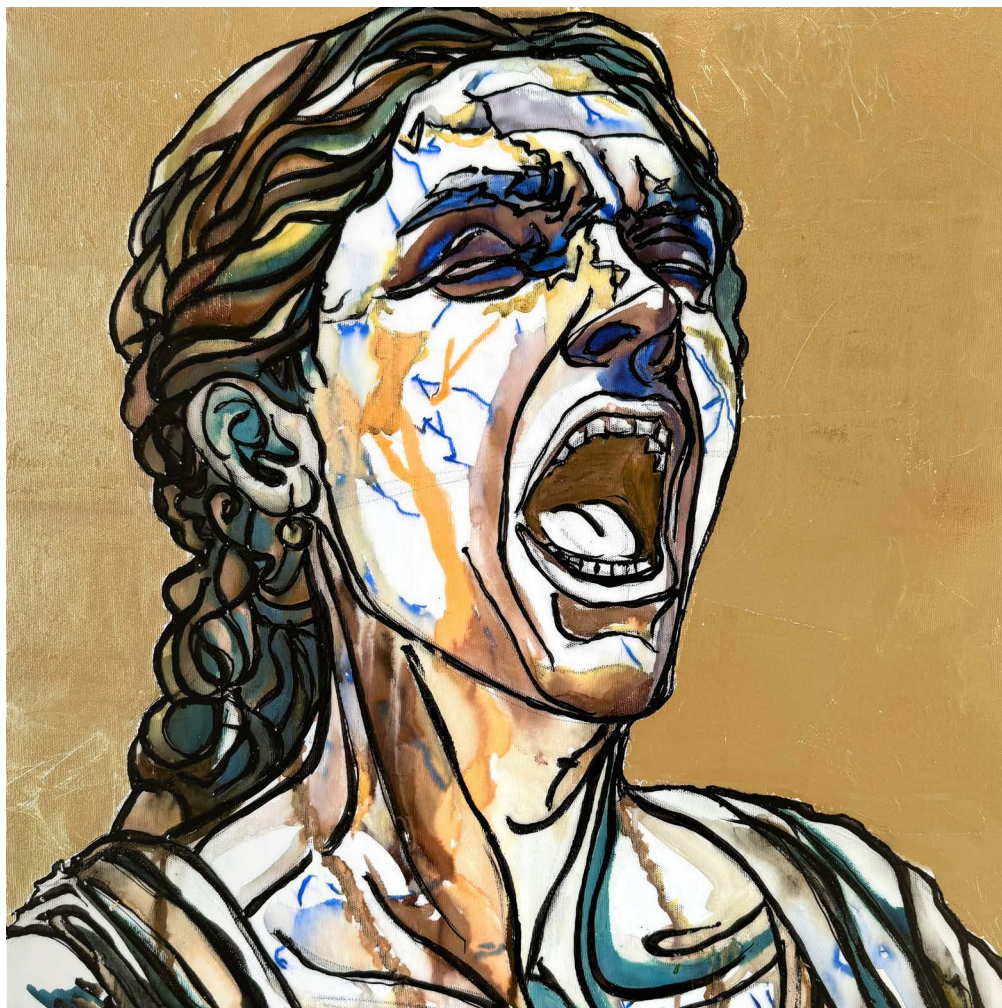


**CRYING FIGURE:
SCULPTURE NO. 3, LIBRARY PASSAGE**

2024

60x60cm

canvas, ink, saffron, potal, epoxy resin



**SCREAMING FIGURE:
SCULPTURE NO. 6, SANCTUARY STAIRS**

2024

60x60cm

canvas, ink, saffron, potal, epoxy resin

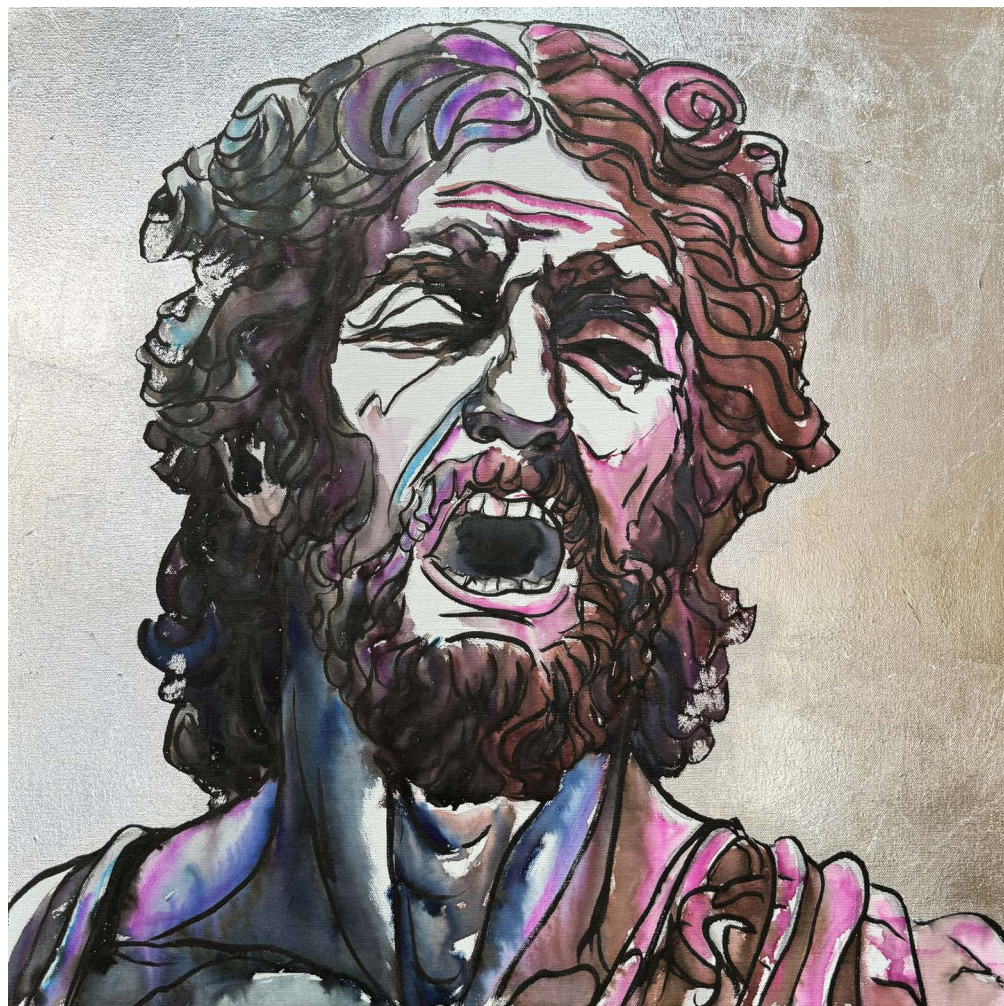


**SCREAMING FIGURE:
SCULPTURE NO. 5, ALTAR PASSAGE**

2024

60x60cm

canvas, ink, saffron, acrylic



**SCREAMING FIGURE:
SCULPTURE NO. 1, ENTRANCE STAIRCASE**

2024

60x60cm

canvas, ink, saffron, potal, epoxy resin



**SCREAMING FIGURE:
SCULPTURE NO. 5, ENTRANCE STAIRCASE**

2024

60x60cm

canvas, ink, saffron, acrylic



**SCREAMING FIGURE:
SCULPTURE NO. 1, TEMPLE ENTRANCE**

2024

90x90cm

canvas, ink, saffron, acrylic



**SCREAMING FIGURE:
SCULPTURE NO. 10, CRYPT OF KINGS**

2024

90x90cm

canvas, ink, saffron, acrylic



**SCREAMING FIGURE:
SCULPTURE NO. 2, INNER CHAMBER**

2024

90x90cm

canvas, ink, saffron, acrylic, sculpting paste



**SCREAMING FIGURE:
SCULPTURE NO. 7, SECRET GARDENS**

2024

60x60cm

canvas, ink, saffron, acrylic



**SCREAMING FIGURE:
SCULPTURE NO. 6. THE HIDDEN GARDEN
(THE SECLUDED PART OF THE ISLAND)**

2025

60x60cm

canvas, ink, acrylic, calligraphy pen,
epoxy resin, flowers, plastic, rhinestones



**SCREAMING FIGURE:
SCULPTURE NO. 3. THE HIDDEN GARDEN
(THE SECLUDED PART OF THE ISLAND)**

2025

60x60cm

canvas, ink, acrylic, calligraphy pen,
epoxy resin, flowers, plastic, rhinestones



EXAMPLE OF
THE EXHIBIT



